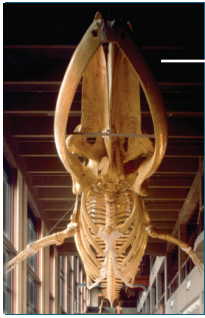


Dale's Dozen Self-Guided Museum Tour

Explore Museum President/CEO Dale Robertson's favorites in this list direct from the corner office! Download a copy of this "Mini-Bite" tour and bring it with you to the Museum for a quick and targeted history lesson.



1 Fin Whale Skeleton Galleria, 1st Floor

One of the iconic artifacts from the old Museum building, the 76' whale skeleton was donated to the Museum by a Grand Rapids physician in 1904. Be sure to stand under it on the first floor to appreciate not just its size, but its majesty.



7 Drop of Water in Habitats 3rd Floor

Take a look at the model of a magnified drop of pond water and see just how many things are contained within one tiny sphere. Like life itself, this necessity of life is complex, amazing, a little unsettling and wonderful to behold.



8 Turtle above the Habitats exit 3rd Floor

Embodying the wonder of childhood for many of us, the turtle also has special meaning in Michigan. It is the symbol of Mackinac Island, one of our State's natural jewels, and holds special status among Michigan's Native American community where it is revered as the symbol of the earth.

2

Streets of Old Grand Rapids 1st Floor

The Streets are a nostalgic 3-D look into the turn of the last century. Take a peek in the windows and talk to shop keepers during "business hours!"



3

The 1928 Spillman Carousel 1st Floor



From its pavilion over the Grand River, this colorful carousel serves as a beacon and landmark in downtown Grand Rapids, and a preview of the fun to be had inside the building.

6

O is for Oddities 2nd Floor

You really need to linger here and look at the assortment of artifacts, including a piece of Abraham Lincoln's vest worn the night he was assassinated and George Washington mourning rings which include locks of his hair.



5

Roger B. Chaffee Planetary Display 2nd Floor

Chaffee's life was tragically cut short in a 1966 Apollo One training session, but his personal story embodies the nation's decade-long quest to understand space for the betterment of mankind.



10

Marx and Lennon stamp S is for Stamps 3rd Floor



People everywhere use humor to process and understand our world. This emotion is evident in the stamp from the Georgian Republic of Abkhazia, an Eastern European country fully impacted by the communist political movement personified by Karl Marx and Vladimir Lenin. In jest, the Marx and Lenin stamp it issued was of Groucho Marx and John Lennon!

4

Roger B. Chaffee Planetary 2nd Floor

A great place to learn, imagine and explore space, the sky dome theater is named in honor of a true hometown hero: a local boy who had a big dream, followed it, and risked all for our nation's goal of space exploration.



General Robert E. Lee Sword Sash V is for Veterans (Collecting A to Z) 3rd Floor

This is the Museum's most compelling artifact for me. It's cool to look at and interesting to think about how old it is, who used it and where it has been, as well as how this piece of history came to be displayed here at the Museum. This artifact and the stories behind the man who wore it and the man who brought it to West Michigan reveal all the complexities of the time and human drama before, during and after the era of its use. That is exactly what this Museum is all about!

12

11

The Lodge in Anishinabek: The People of this Place 3rd Floor

Within the Native American exhibit is an oval shaped area with benches representing a tribal meeting place or Lodge. According to tribal custom the Lodge is entered from the North and exited from the South. Lodges serve as a place for quiet contemplation, informal tribal gatherings and all forms of tribal business. Pause here to sit, take in the quiet and think.